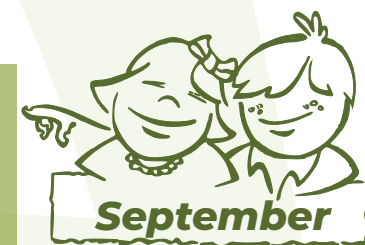
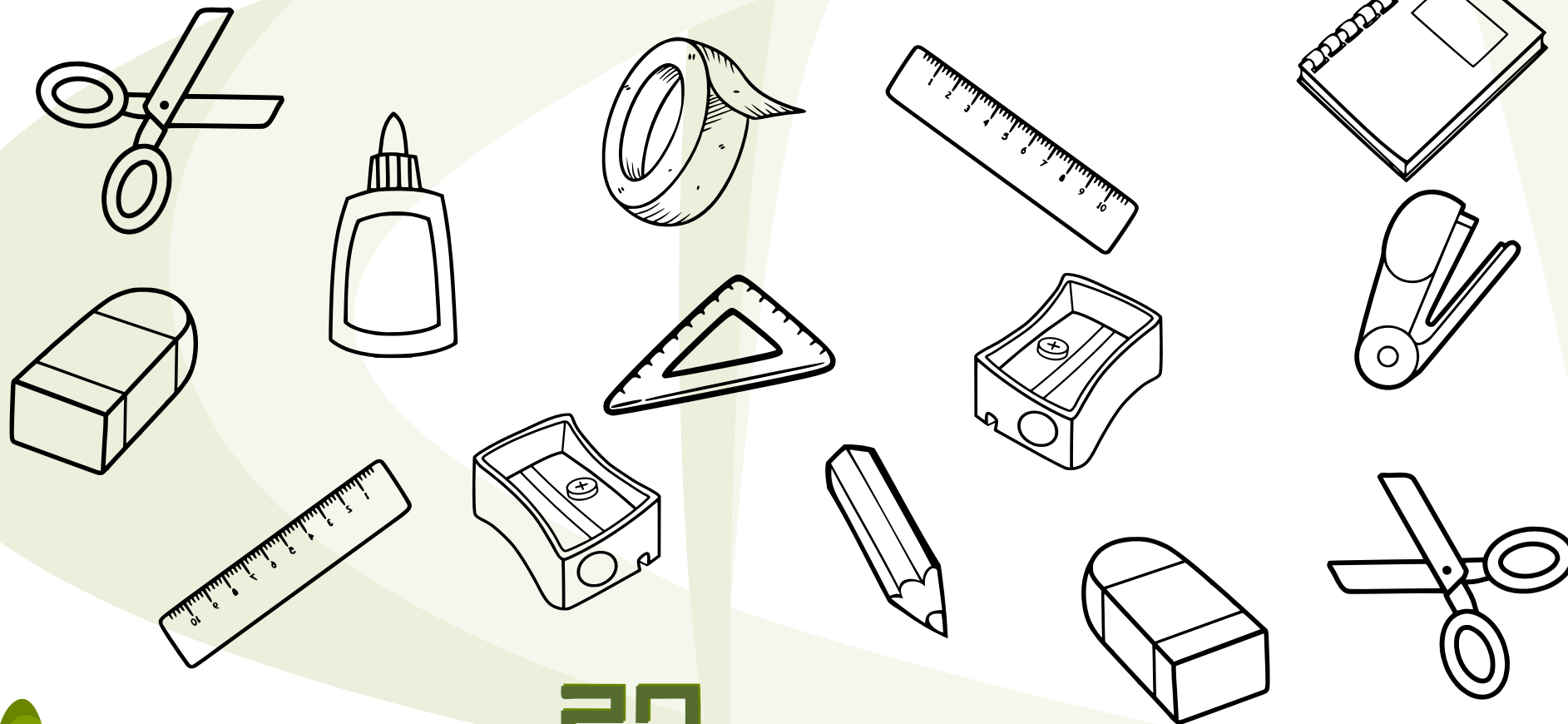


# Preeschool Monthly Problem

## Two Are Cople

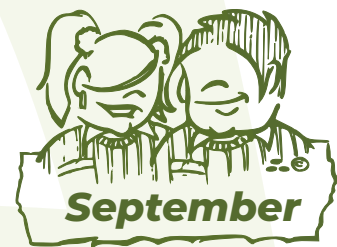


Discover the five school supplies that are not a couple.  
Color them blue.



# Primary Monthly Problem

**Pets**



I have a beagle puppy and my sister has a cocker puppy. They both love dog cookies.

My dog eats 5 cookies a day, my sister's dog eats 4 cookies a day.

To save money, we buy a jar of 60 cookies every week.

Are these cookies enough for a week?  
How many are left over?

If not, how many extra cookies should we buy for them?

# Secondary Monthly Problem

## Equivalent Areas



ABCD square of side 12 cm.

E is the center of the square.

Determine  $a$  such that

$$A_1 = A_2 = A_3.$$

