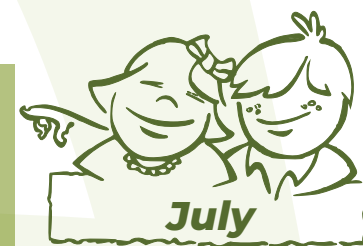
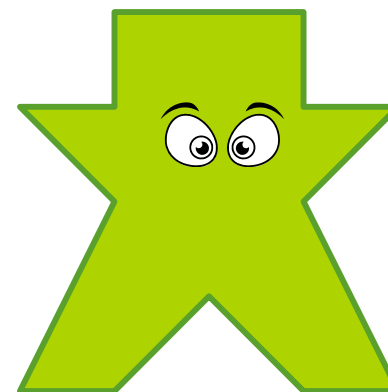
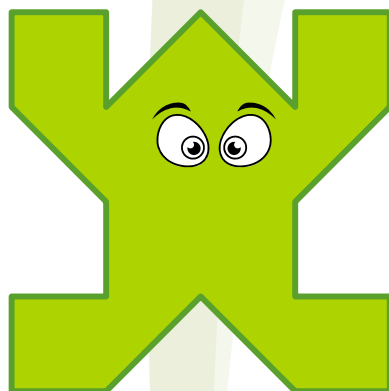
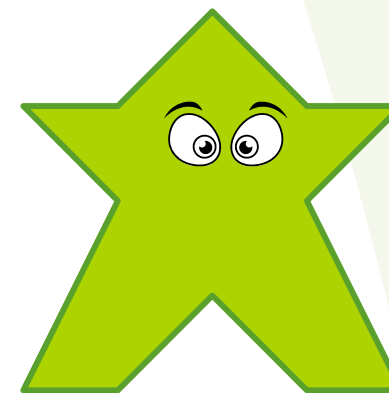
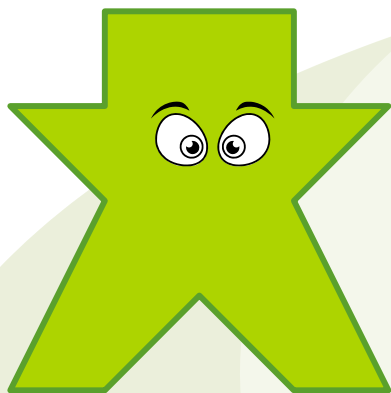


# Preeschool Monthly Problem

## Monsters

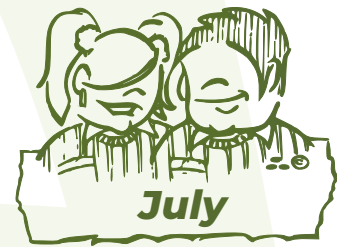


Discover the monsters that are the same.



# Primary Monthly Problem

## Standing in Line



The recess bell has just rung and many children have rushed out to line up to shop at the school store.



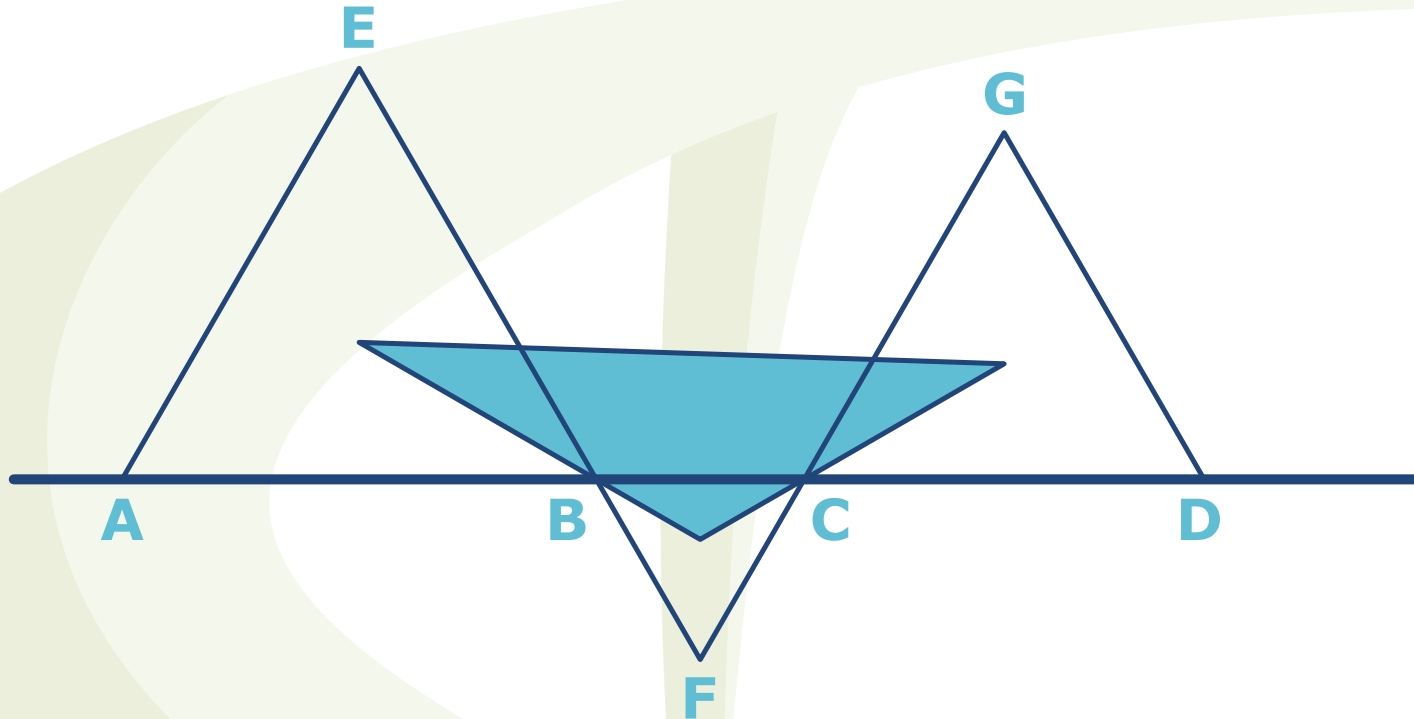
Margaret surveys the line and states:

**“In front of me there are twice as many children as behind me. I’m 11th in line.”**

How many children are standing in line?

# Secondary Monthly Problem

## Barycenters



Calculate the area of the equilateral triangle formed by joining the barycenters of the equilateral triangles  $\triangle ABE$ ,  $\triangle BFC$ , and  $\triangle CDG$  as a function of the lengths  $AB$ ,  $BC$ , and  $CD$ .

