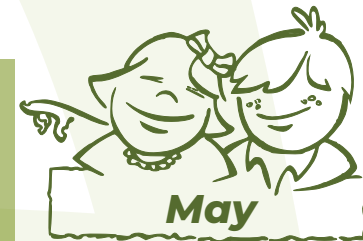

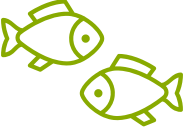



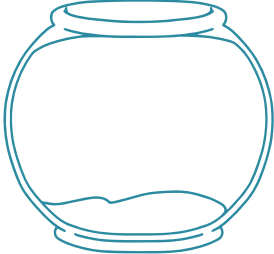


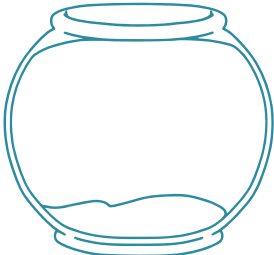


Preschool Monthly Problem

Additive Table



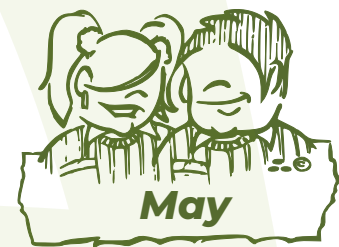
Draw the corresponding number of fish in each aquarium.



Primary Monthly Problem

Old Book



Thomas found in the trunk where some of his grandparents' memories are kept a very old book with a detached cover and very yellowed pages.

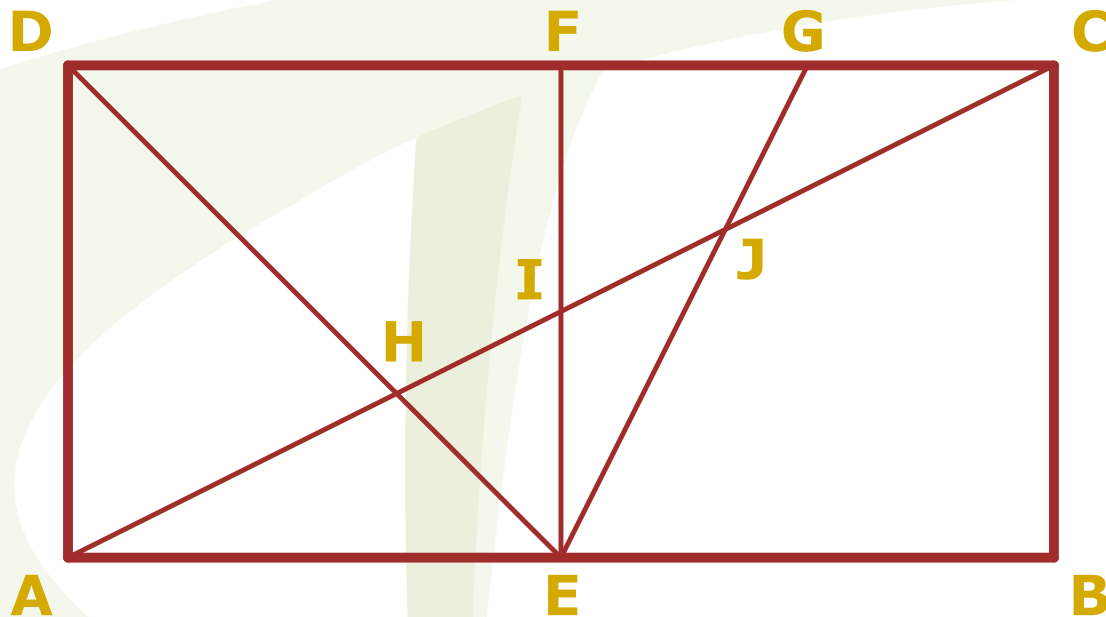
When he examined it, he noticed that it was missing pages as it jumped from page 36 to page 81.

Can you find out how many pages were missing from the book?



Secondary Monthly Problem

Quadrilateral



ABCD is a rectangle whose sides are in the ratio **1:2**.

E midpoint of \overline{AB} ; **F** midpoint of \overline{CD} ;

G midpoint of \overline{CF} .

Determine the nature of $\triangle EJH$.