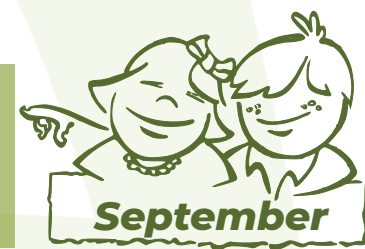


Preschool Monthly Problem

Numeric



In the following 6×6 array only the digits 1 through 6 appear.

3	4	6	1	6	2
2	6	3	4	2	4
6	1	2	6	2	6
4	2	5	3	6	2
2	3	4	1	5	4
1	2	6	2	4	3

Which number appears the most times?

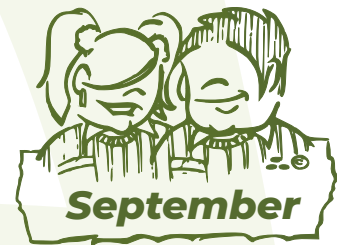
Which number appears the least number of times?

Which numbers appear more than six times?

Which numbers appear less than six times?

Primary Monthly Problem

Distribution



Write in each box one of the digits from 1 to 9 in such a way that each one appears exactly once and that the four operations are fulfilled.

$$\square - \square = \square$$

×

$$\square \div \square = \square$$

=

$$\square + \square = \square$$



Secondary Monthly Problem

Squares



The figure shows eight congruent squares inside a circle.

If the shaded area is equal to 40 cm^2 , determine the radius of the circle.

