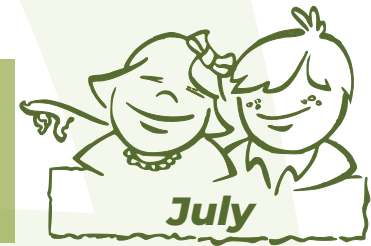
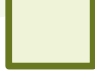
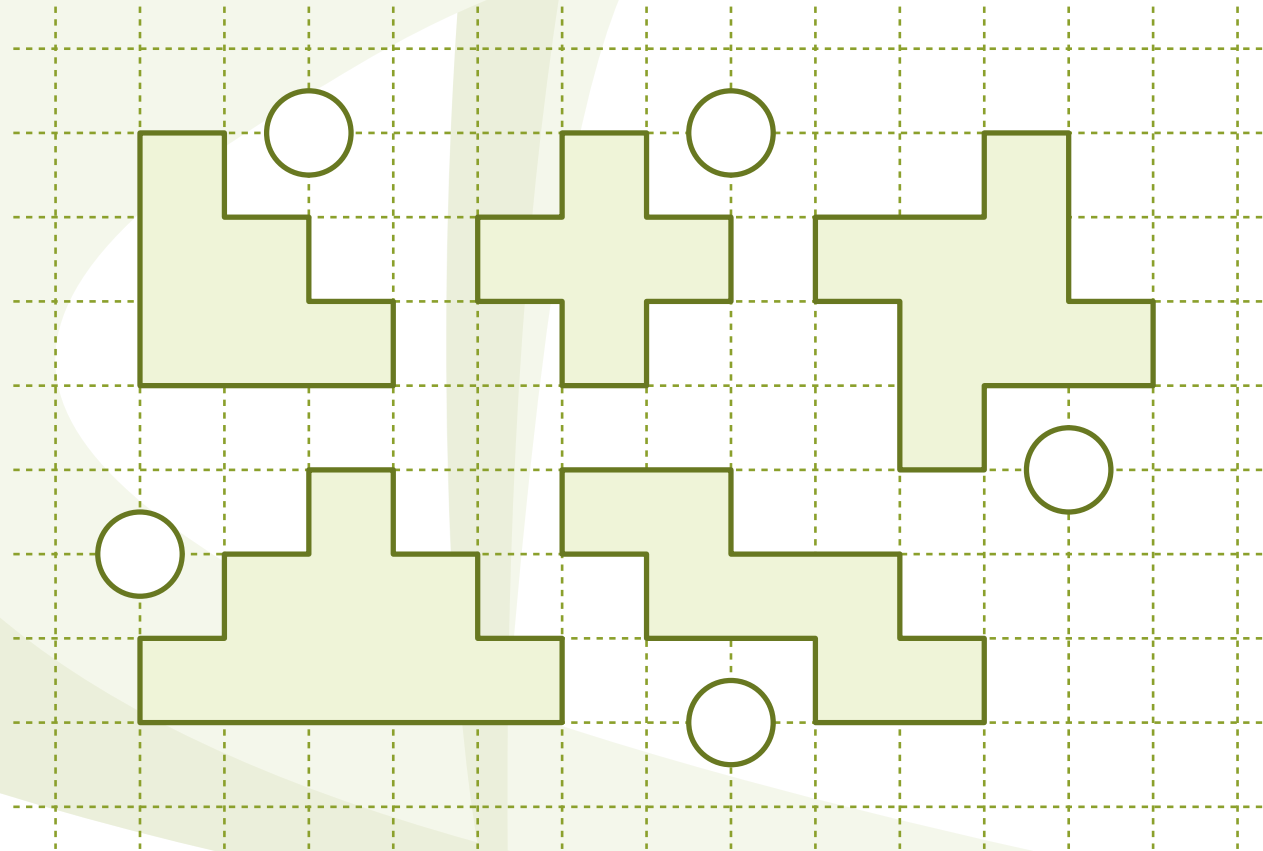


Preschool Monthly Problem

Regions

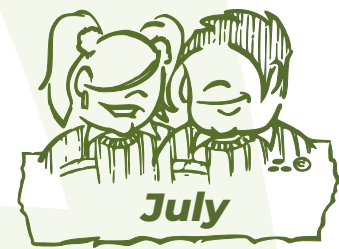


Write in each circle the number of squares like this one , which recompose the corresponding region.



Primary Monthly Problem

Walk Along The Alameda



Yesterday we went for a walk along a very long Alameda, lined with tall, leafy trees that protected us with their branches from the strong rays of the sun. Two hundred trees were planted on either side of the path, each one fifteen meters from the next. When we reached the end of the alameda, we rested, ate our lunch, and returned the same way. All in all, we spent six hours.



Is it true that we
walked a total of six
kilometers?

Secondary Monthly Problem

Polygons



Show that the shaded polygon is similar to the quadrilateral **ABCD**.

