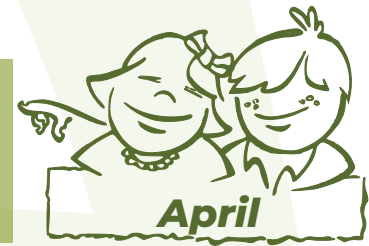


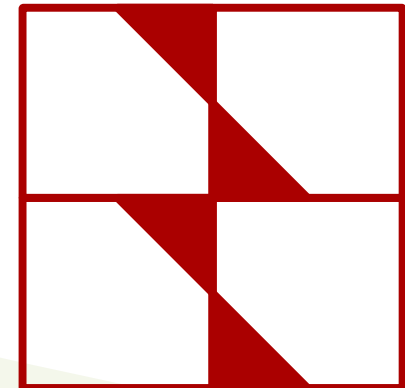
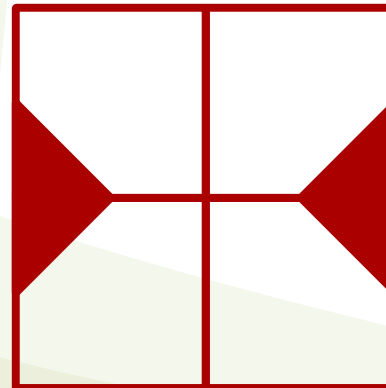
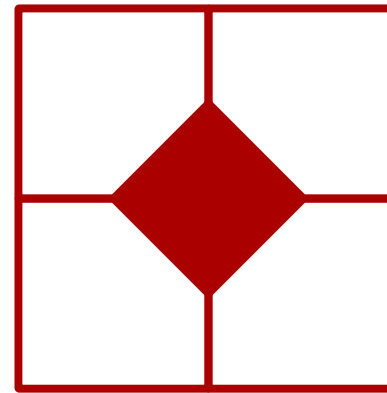
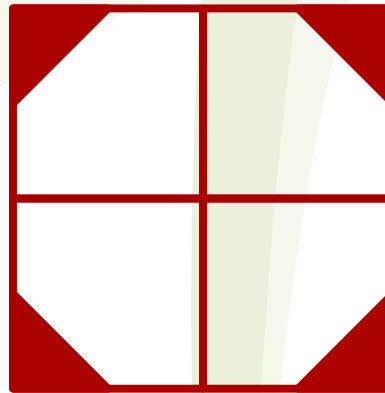
Preschool Monthly Problem

Mosaics



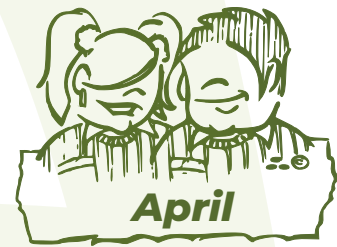
Cut out four tiles like the one shown on the left.

Using the four tiles each time, reconstruct the figures on the right.

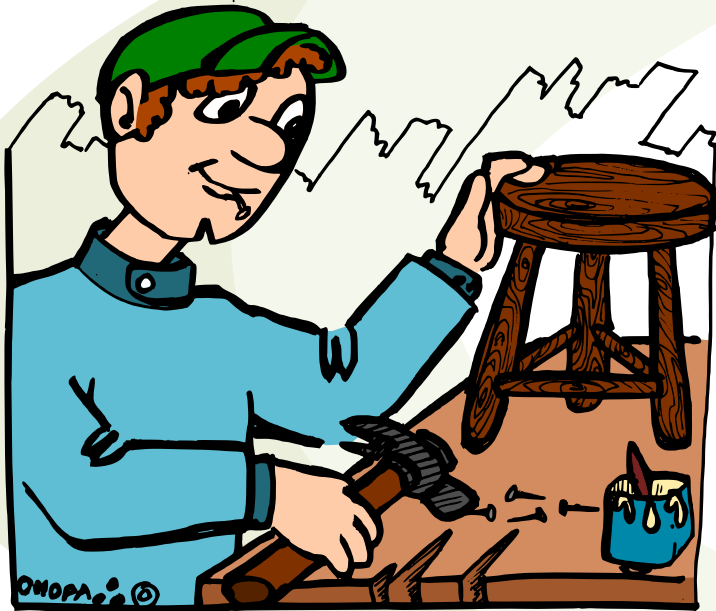


Primary Monthly Problem

Seats



Don Jacobo the carpenter manufactures three-legged seats and four-legged seats.



This week he made **50** seats of both kinds and needed **180** legs.

Determine how many three-legged seats and how many four-legged seats the carpenter made this week.

Secondary Monthly Problem

Area



ABCD square

$$AE = 4$$

$$AF = 6$$

$$AG = 8$$

$$AH = HD = 5$$

Determine the shaded area.

